



## CSS CIVIL & SITEWORK DATABASE

The Construction Support Services Civil and Sitework database has over 5100 items of work for General Conditions, Existing Conditions, Earthwork, Exterior Improvements and Site Utilities. The phase structure of the database is arranged in the 2018 divisions of the CSI Master Format.

We have utilized crew-based pricing for labor activities which can be modified by the end user. Multiple rate tables are also available within the database.

This database is complete with labor productivity, material unit pricing and Subcontractor pricing which can be modified by the end user with their specific historical data.

The database includes extensive assembly help files with sample details and photos for every assembly accessible from both estimating and eTakeoff.

eTakeoff traces and Bridge mappings are included with the database.

### Database Specifications

Over 5,100 Items  
Over 1000 Formulas  
Over 120 Assemblies

<u>Division</u>	<u># of Assemblies</u>
General Conditions	2
Existing Conditions	12
Site Preparation	6
Excavation	5
Fill	2
Erosion Control	5
Paving/Pad Stabilization	5
Excavation Stabilization	7
Shoring	5
Foundations	5
Paving & Walks	12
Formed Site Concrete	6
Pavers	5
Pavement Marking	4
Artificial Turf	2
Fencing	11
Retaining Walls	3
Bollards	2
Landscape/Irrigation	4
Water Utilities	3
Sewer Utilities	2
Storm Drainage	9
Detention/Retention	6
Gas Lines	1
Highway Guardrails	1

Site-Civil Setup Assembly Takeoff: Site-Civil Setup

3100- EARTHWORK  
 3114-005 Strip & Stock Topsoil (Calc Cy)  
 Pass 1 3/22/2024 10:47:50 AM  
 New pass

Strip & Stock Topsoil (Calc Cy)	Quantity	1.000	each
	Area	220,000.000	sf
	Depth "	6.000	in
	Strip & Stock Type	1.000	
	Haul off Strippings?	Yes	
	Swell Factor	30.000	%

Pass 2

Phase	Item	Description	Quantity	Unit	Location
1		Strip & Stock			
2	311405 05	Strip & Stockpile Topsoil - Easy	4,075.000	cy	
3	311405 50	Haul Strippings Off Site	5,297.500	cy	
4					

Notes Attachment Adjust Productivity OK Cancel Help

Quantity: 4,075.00 cy Cost: \$50,029.80 \$12.28 / cy

Site-Civil Setup Assembly Takeoff: Site-Civil Setup

3300- SITE UTILITIES  
 3342-013a Steel Culvert Pipe  
 Pass 1 3/22/2024 10:52:27 AM  
 New pass

Steel Culvert Pipe	Quantity	1.000	each
	Length	45.000	lf
	Pipe Diameter "	18.000	
	Slope Ends Req'd?	Yes	
	Qty of Sloped Ends	2.000	ea

Pass 2

Phase	Item	Description	Quantity	Unit	Location
1		Stl Culvert Pipe			
2	334213 15	18" Steel Culvert Pipe /lf	45.000	lf	
3		Culvert Slope Ends			
4	334213 50	18" Steel Sloped End /ea	2.000	ea	
5					

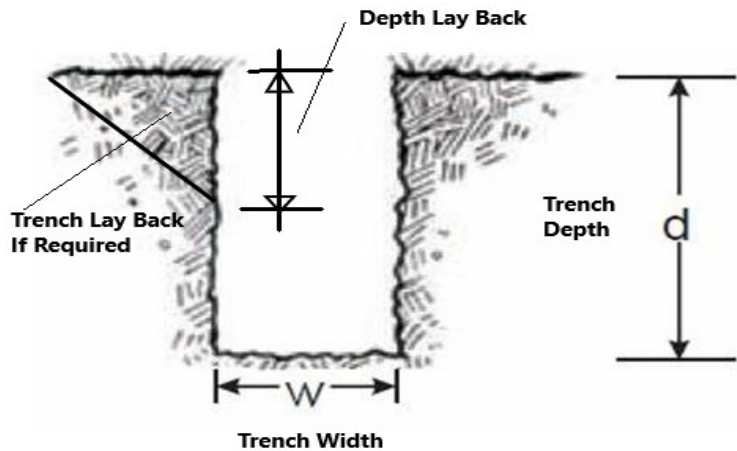
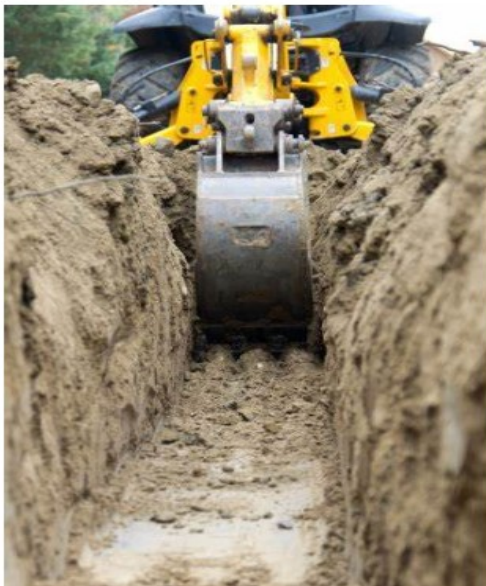
Notes Attachment Adjust Productivity OK Cancel Help

Quantity: 45.00 lf Cost: \$3,037.14 \$67.49 / lf

	Assembly	Phase	Description	Takeoff Quantity	Labor Productivity	Labor Hours	Labor Price	Labor Cost/Unit	Labor Amount	Material Price	Material Amount	Sub Price	Sub Amount	Equip Price	Equip Cost/Unit	Equip Amount	Total Amount
156	3168-013		<b>Rock Anchors</b>														
157		316813	Drill & Epoxy 1" Bolt	2.00 ea	1,400 hr / ea	2.80	15.00 /hr	21.00 /ea	42	26.00 /ea	52	-	-	8.00 /ea	8.00 /ea	16	110
158		316813	1"x 18" Galv. A.B. w/Dbl Nuts/Washers	2.00 ea	-	-	-	-	-	16.50 /ea	33	-	-	-	-	-	33
159	3211-005		<b>Base Course no Paving</b>														
160		321105	Crush Stone 1/2" Type D	0.80 tn	0.032 hr / tn	0.03	18.42 /hr	0.58 /tn	0	21.00 /tn	17	-	-	3.50 /tn	3.50 /tn	3	20
161	3212-005		<b>Cold Mix Asphalt Paving-Tn</b>														
162		321205	Cold Mix Asphalt /tn	0.50 tn	0.200 hr / tn	0.10	19.39 /hr	3.88 /tn	2	85.00 /tn	43	-	-	20.00 /tn	20.00 /tn	10	54
163		321205	Tack Coat	1.00 sy	0.001 hr / sy	0.00	15.00 /hr	0.02 /sy	0	0.80 /sy	1	-	-	-	-	-	1
164		321105	Crush Limestone 3/4"	0.10 tn	0.032 hr / tn	0.00	18.42 /hr	0.60 /tn	0	20.75 /tn	2	-	-	3.50 /tn	3.50 /tn	0	2
165	3212-010		<b>Hot Mix Asphalt Paving-Tn</b>														
166		321205	Hot Mix Asphalt Base /tn	0.50 tn	0.200 hr / tn	0.10	19.39 /hr	3.88 /tn	2	100.00 /tn	60	-	-	20.00 /tn	20.00 /tn	10	62
167		321205	Hot Mix Asphalt Surface /tn	0.50 tn	0.200 hr / tn	0.10	19.39 /hr	3.88 /tn	2	120.00 /tn	60	-	-	20.00 /tn	20.00 /tn	10	72
168		321205	Tack Coat	2.00 sy	0.001 hr / sy	0.00	15.00 /hr	0.02 /sy	0	0.80 /sy	2	-	-	-	-	-	2
169		321105	Crush Limestone 3/4"	0.21 tn	0.032 hr / tn	0.01	18.42 /hr	0.60 /tn	0	20.75 /tn	4	-	-	3.50 /tn	3.50 /tn	1	5
170	3212-010		<b>Hot Mix Asphalt Paving-sy</b>														
171		321205	2" Hot Mix Asphalt Surface /sy	1.00 sy	0.020 hr / sy	0.02	19.39 /hr	0.39 /sy	0	120.00 /tn	16	-	-	20.00 /tn	2.64 /sy	3	19
172		321205	3" Hot Mix Asphalt Base /sy	1.00 sy	0.030 hr / sy	0.03	19.39 /hr	0.58 /sy	1	85.00 /tn	17	-	-	20.00 /tn	3.96 /sy	4	21
173		321205	Tack Coat	1.00 sy	0.001 hr / sy	0.00	15.00 /hr	0.02 /sy	0	0.80 /sy	1	-	-	-	-	-	1
174		321105	Crush Stone 1/2" Type D	0.09 tn	0.032 hr / tn	0.00	18.42 /hr	0.50 /tn	0	21.00 /tn	2	-	-	3.50 /tn	3.50 /tn	0	2
175	3212-011		<b>Asphalt Curb</b>														
176		321205	Hot Mix Asphalt Surface /tn	0.50 tn	0.200 hr / tn	0.10	19.39 /hr	3.88 /tn	2	120.00 /tn	60	-	-	20.00 /tn	20.00 /tn	10	72
177	3213-013		<b>Concrete Paving</b>														
178		321313	Ready Mix 3500 PSI	0.51 cy	-	-	-	-	-	150.00 /cy	76	-	-	-	-	-	76
179		321313	Forms Steel Type	33.00 lf	-	-	-	-	-	1.04 /lf	34	-	-	-	-	-	34
180		321313	Form 2x6 Random Length	33.00 lf	-	-	-	-	-	1.65 /lf	54	-	-	-	-	-	54
181		321313	Wood Stakes At Forms	17.00 ea	-	-	-	-	-	0.80 /ea	14	-	-	-	-	-	14
182		321313	# 3 Rebar @ 18" cc	29.78 sf	-	-	-	-	-	0.75 /sf	11	350.00 /tn	3	-	-	-	14
183		321313	Wire Mesh 6x6 W1.4x W1.4 10/10 ga.	29.78 sf	-	-	-	-	-	0.19 /sf	6	0.19 /sf	6	-	-	-	11
184		321313	Paving Form Labor -lf	66.00 lf	0.113 hr / lf	7.46	20.00 /hr	2.26 /lf	149	-	-	-	-	-	-	-	149

21	0200-060		<b>Demo Asphalt Paving</b>														
22		024113	Remove Asphalt -L&E	29.02 sf	0.010 hr / sf	0.29	25.25 /hr	0.25 /sf	7	-	-	-	-	0.40 /sf	0.40 /sf	12	19
23		024113	Haul Off Asphalt - L&E	0.47 cy	0.056 hr / cy	0.03	15.00 /hr	0.84 /cy	0	-	-	-	-	3.50 /cy	3.50 /cy	2	2
24	0200-065		<b>Demo Concrete/Masonry Walls</b>														
25		024113	Remove Conc/Masonry Walls -L&E	4.50 cy	2.500 hr / cy	11.25	25.25 /hr	63.12 /cy	284	-	-	-	-	20.00 /cy	20.00 /cy	90	374
26		024113	Haul Off Concrete - L&E	5.63 cy	0.056 hr / cy	0.32	15.00 /hr	0.84 /cy	5	-	-	-	-	3.50 /cy	3.50 /cy	20	24
27	0200-100		<b>Demo Pole Bases</b>														
28		024113	Remove Pole Bases -L&E	0.23 cy	3.000 hr / cy	0.70	18.42 /hr	55.24 /cy	13	-	-	-	-	20.00 /cy	20.00 /cy	5	18
29		024113	Haul Off Concrete - L&E	0.35 cy	0.056 hr / cy	0.02	15.00 /hr	0.83 /cy	0	-	-	-	-	3.50 /cy	3.50 /cy	1	2
30	0261-005		<b>Contaminated Soil Removal</b>														
31		026105	Contaminated Soil Removal - cy	21.00 cy	0.050 hr / cy	1.05	25.25 /hr	1.26 /cy	27	-	-	-	-	2.50 /cy	2.50 /cy	53	79
32		026105	Contaminated Soil Hauling - cy	26.25 cy	0.050 hr / cy	1.31	15.00 /hr	0.75 /cy	20	-	-	-	-	3.50 /cy	3.50 /cy	92	112
33	3111-005		<b>Clear &amp; Grub (Calc Acres)</b>														
34		311105	Clear & Grub Light Growth	0.01 ac	30,000 hr / ac	0.15	25.25 /hr	758.00 /ac	4	-	-	-	-	1,400.00 /ac	1,400.00 /ac	7	11
35	3114-005		<b>Strip &amp; Stock Topsoil (Calc Cy)</b>														
36		311405	Strip & Stockpile Topsoil - Easy	6.00 cy	0.005 hr / cy	0.03	25.25 /hr	0.13 /cy	1	-	-	-	-	1.00 /cy	1.00 /cy	6	7
37		311405	Haul Strippings Off Site	7.20 cy	0.100 hr / cy	0.72	15.00 /hr	1.50 /cy	11	-	-	-	-	7.00 /cy	7.00 /cy	50	61
38	3122-005		<b>Rough Grade Site (Calc Acres)</b>														
39		312205	Rough Grade Site < 1/4 ac.	0.00 ac	35,000 hr / ac	0.07	25.25 /hr	885.00 /ac	2	-	-	-	-	175.00 /ac	175.00 /ac	0	2
40	3123-016		<b>Excavation (Calc Cy)</b>														
41		312316	Excavation w/ Dozer	3.00 cy	0.050 hr / cy	0.15	25.25 /hr	1.26 /cy	4	-	-	-	-	2.50 /cy	2.50 /cy	8	11
42	3123-023		<b>Fill (Calc Cy)</b>														
43		312323	Site Fill from Stockpile	3.30 cy	0.015 hr / cy	0.05	25.25 /hr	0.38 /cy	1	-	-	-	-	1.30 /cy	1.30 /cy	4	6
44	3123-025		<b>Trench with Backhoe</b>														
45		312333	Trench with Backhoe Excavator	2.69 cy	0.030 hr / cy	0.08	25.25 /hr	0.76 /cy	2	-	-	-	-	1.50 /cy	1.50 /cy	4	6
46		312333	Backfill Trench with Loader/Dozer	2.69 cy	0.030 hr / cy	0.08	25.25 /hr	0.76 /cy	2	-	-	-	-	1.50 /cy	1.50 /cy	4	6
47		312333	Compact Trench with Roller	2.69 cy	0.030 hr / cy	0.08	25.25 /hr	0.76 /cy	2	-	-	-	-	3.00 /cy	3.00 /cy	8	10

Examples of the Assembly Help files attached to each assembly.



# Clear & Grub Site

