



CSS INDUSTRIAL GENERAL CONTRACTOR DATABASE

The Construction Support Services Industrial GC database has over 15,000 items of work from Division 1 through 43. This database is a compilation of our Commercial General Contractor Database, Structural Steel Database, and our Underground Utility Database. We have also added process piping labor and material items along with assemblies for those trades. The database is arranged in the 2015 divisions of the CSI Master Format and utilizes crew labor.

This database comes with eTakeoff traces and Bridge mappings for all of the assemblies and over 2,000 individual items.

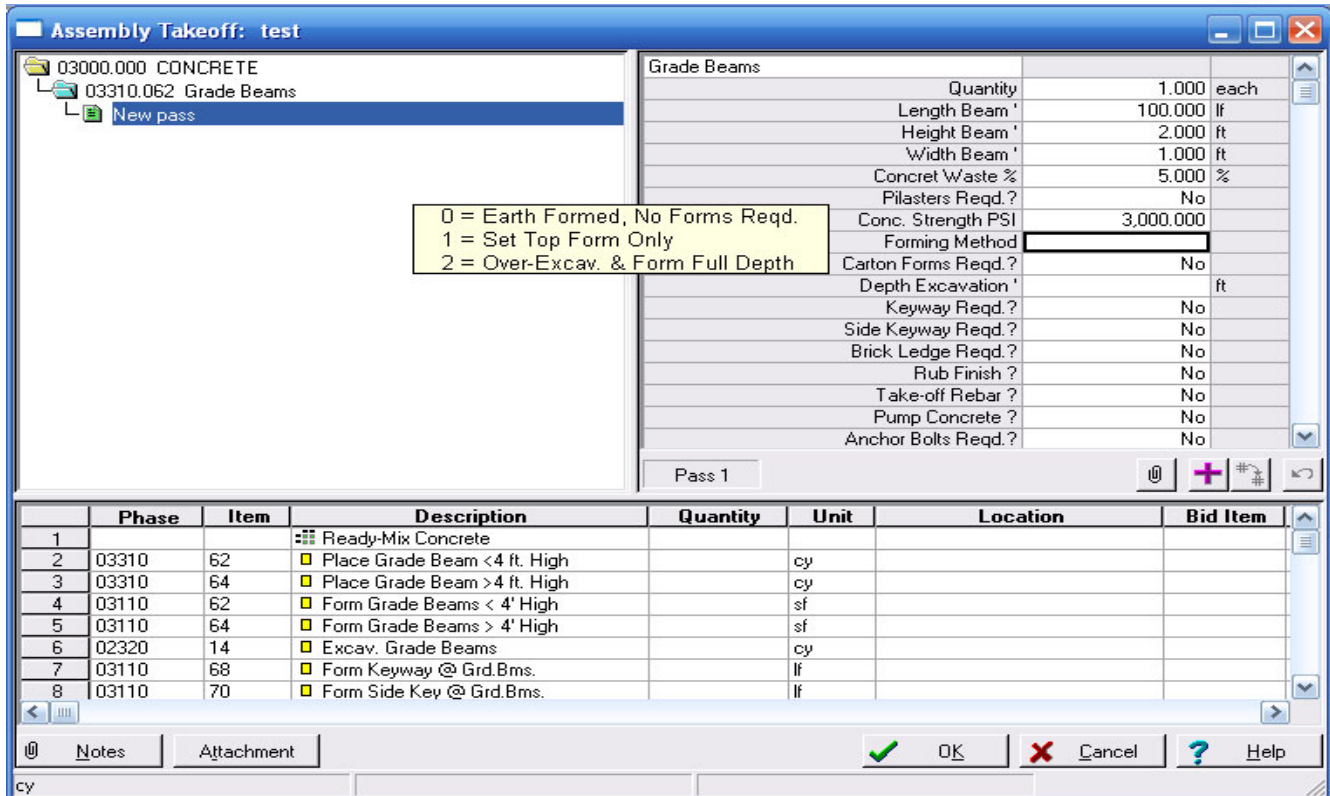
The database is complete with labor productivity, material unit pricing and Subcontractor pricing which can be modified by the end user with their specific historical data.

The databases include assemblies with extensive assembly help for every division of work.

Database Specifications

Over 15,000 Items
Over 1000 Formulas
Over 500 Assemblies

<u>Division</u>	<u># of Assemblies</u>
Conceptual	49
General Conditions	2
Existing Conditions	2
Concrete	62
Masonry	13
Metals – Structural Steel	70
Wood & Plastics	46
Thermal & Moist.	22
Openings	8
Finishes	26
Specialties	12
Equipment	2
Furnishings	1
Special Construction	2
Elevators	1
Plumbing	79
HVAC	12
Electrical	22
Earthwork	12
Site Improvements	27
Underground Utilities	16
Process Piping	<u>18</u>
Total	504



Phase	Description	Takeoff Quantity	Labor Price	Labor Amount	Material Price	Material Amount	Sub Price	Sub Amount	Equip Price	Equip Amount	Total Cost/Unit	Total Amount
	SITWORK											
02320	BUILDING EXCAVATION											
	Excav. Grade Beams	44.44 cy	-	-	-	-	-	-	2.81 /cy	125	2.81 /cy	125
	Haul-off Spoil	23.44 cy	-	-	-	-	8.10 /cy	190	-	-	8.10 /cy	190
	Backfill/Compact	34.33 cy	18.72 /cy	643	-	-	-	-	-	-	18.72 /cy	643
	Level & Grade	100.00 sf	0.19 /sf	19	-	-	-	-	-	-	0.19 /sf	19
	CONCRETE											
03110	FORMWORK											
	Form Grade Beams < 4' High	400.00 sf	2.08 /sf	832	-	-	-	-	-	-	2.08 /sf	832
	Form Keyway @ Grd.Bms.	100.00 lf	0.47 /lf	47	-	-	-	-	-	-	0.47 /lf	47
	3/4" BB Form Plywood	400.00 sf	-	-	22.00 /sf	275	-	-	-	-	0.69 /sf	275
	Dimension Form Lumber	600.00 bf	-	-	0.53 /bf	317	-	-	-	-	0.53 /bf	317
	Keyway Matl.	100.00 lf	-	-	0.28 /lf	28	-	-	-	-	0.28 /lf	28
03150	CONCRETE ACCESSORIES											
	12" Snap Tie	120.00 ea	-	-	0.55 /ea	66	-	-	-	-	0.55 /ea	66
03310	CAST IN PLACE CONCRETE											
	3000 PSI HR	7.41 cy	-	-	72.00 /cy	533	-	-	-	-	72.00 /cy	533
	Place Grade Beam <4 ft. High	7.41 cy	5.20 /cy	39	-	-	-	-	-	-	5.20 /cy	39
03350	CEMENT FINISHING											
	Finish Grade Beam Top	100.00 sf	0.21 /sf	21	-	-	-	-	-	-	0.21 /sf	21
	BFP Vertical	400.00 sf	0.03 /sf	10	0.02 /sf	7	-	-	-	-	0.04 /sf	17
03390	CURING & PROTECTING											
	Curing Compound Vert. Surface	400.00 sf	0.03 /sf	10	0.03 /sf	11	-	-	-	-	0.05 /sf	22
	METALS											
05510	MISC. METALS											
	Embed Anchor Bolts	25.00 ea	3.64 /ea	91	-	-	-	-	-	-	3.64 /ea	91

Example of the Assembly Help files attached to each assembly

